





****AVAILABLE AUGUST****

NEXA properties are delighted to welcome to the market this spacious, two bedroom, top floor apartment in the sought after location of central Southsea.

Situated just a short walk from Southsea sea front, local shops and amenities, this flat is perfectly located to show all Southsea has to offer.

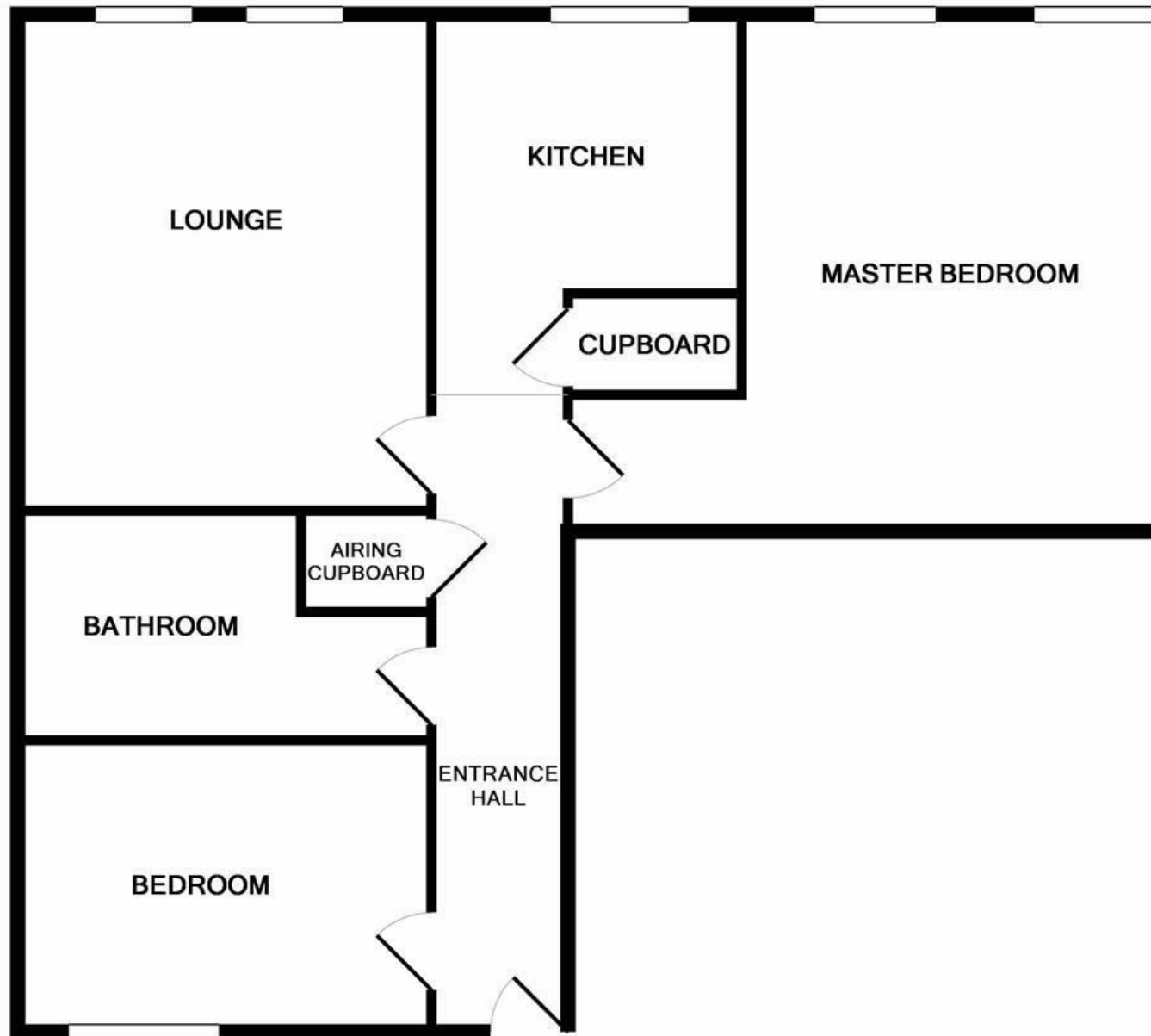
The property internally is much larger than most two bedroom apartments offering an extra large double bedroom, spacious lounge, kitchen and bathroom. The huge benefit of this property is the security gated, allocated parking space, something which is an absolute premium and a must in this location.

Recently refurbished, fully decorated with new carpets throughout.

Offered unfurnished and available August.



- TWO BEDROOM APARTMENT
- SECURITY GATED ALLOCATED PARKING SPACE
- CENTRAL SOUTHSEA
- TWO MINUTE WALK FROM SOUTHSEA SEAFRONT
- SPACIOUS APARTMENT
 - TOP FLOOR
 - TWO DOUBLE BEDROOMS
- OFFERED UNFURNISHED
 - AVAILABLE AUGUST



TOTAL APPROX. FLOOR AREA 872 SQ.FT. (81.0 SQ.M.)

Whilst every attempt has been made to ensure the accuracy of the floor plan contained here, measurements of doors, windows, rooms and any other items are approximate and no responsibility is taken for any error, omission, or mis-statement. This plan is for illustrative purposes only and should be used as such by any prospective purchaser. The services, systems and appliances shown have not been tested and no guarantee as to their operability or efficiency can be given

Made with Metropix ©2019